



University of  
**Nottingham**

UK | CHINA | MALAYSIA

A large, high-resolution image of the Earth as seen from space, showing the curvature of the planet and various landmasses and oceans. The image is framed by a thin white border.

# Delivering HESA Data Futures

Laura Jackson



# The Story So Far....



# Delivering HESA in Alteryx

- New student record system 2019
- Delivered HESA functionality did not work

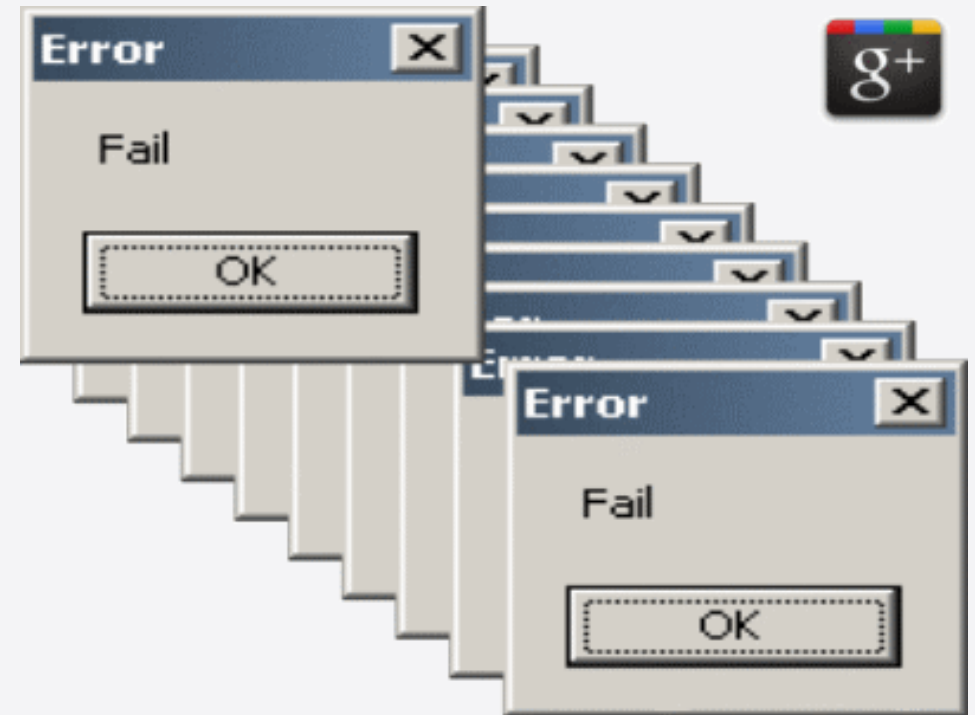


# Delivering HESA in Alteryx

## What we were promised



## What We Got





# Delivering HESA in Alteryx

- New student record system 2019
- Delivered HESA functionality did not work
- Options paper to build a solution for HESA – 3 strands
  - Rebuild SRS to make functionality work (rough estimate 400+ days from spec– time to HESA delivery 250 days)
  - Build a functional HESA solution using Alteryx to take base data from the SRS
  - Something else. Which no-one could think of.
- Team built a functional HESA solution in 6 months, which has since been used to deliver 3 BaU HESA Returns



# Successes of HESaryx

- Almost totally in team control, built and delivered by the experts
- Developed a collaborative team approach – no single points of success
- Easily adapted, can respond to changes from HESA within minutes
- HESA data quality linked to the HESA process and acted on by SMEs (Data quality issues decreased by 50% in the first run of HESaryx)
- Allowed the team to naturally move to an agile (ish) way of working, which lends itself to developing HDF



# Delivering HESA Data Futures









# Beginning our HDF journey from a position of strength

- HESAryx delivery meant that we already knew and understood how the SRS “works” – much of the discovery work for HDF already done
- And really well documented
- Much of HESAryx can be reused – lift and shift
- Use the already proven way of working to design and build new parts of HDF, team remains agile
- Minimum Viable Product (but we know how to develop it later!)

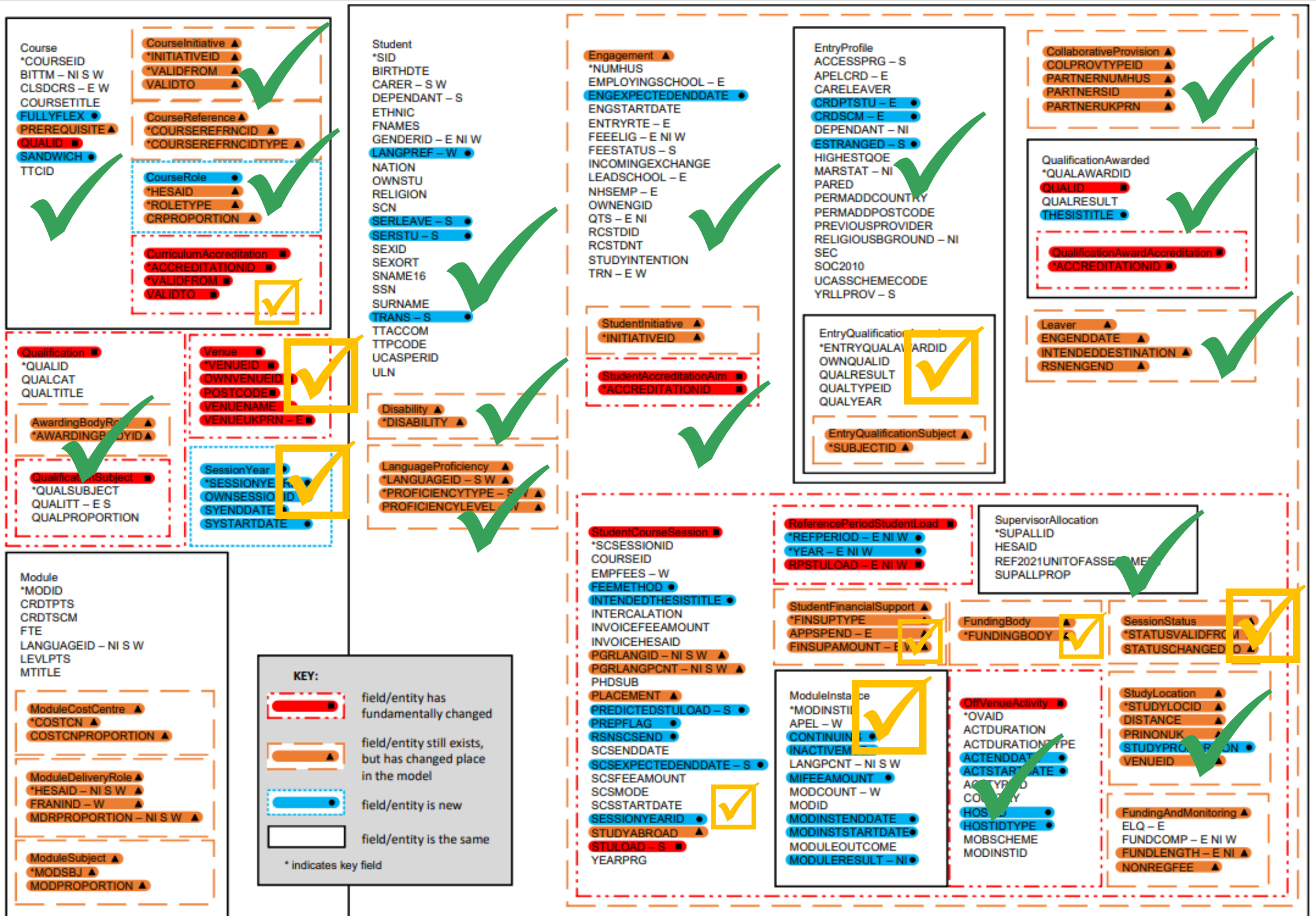


# Where are we now?

Green tick = Complete, tested and Live

Yellow = in progress (varying between just started and in testing)

A few areas yet not started yet (no mark)





# Delivering HDF – the challenges

- Vague or incorrect guidance from HESA
- Knock-on effects of new structure – building in the right granularity and flexibility
- Late-in-the-day changes from OfS consultation, lack of finalised information
- How can we assure our build validity before it's complete?
- Growing anxiety in DTS about delivering 'IT' without them



# Building on other opportunities from HDF

## Building HESA Data futures has given us more opportunities

- Data Curation programme
  - Maximising changes to HESA to refresh all data approaches
  - Best quality and curated data
- Snowflake
- Data Quality
- Data Governance
- Analytics output



# And some challenges

- Business Intelligence Strategy
- DTS
- The Risk Register
- Successful workarounds





University of  
**Nottingham**

UK | CHINA | MALAYSIA

